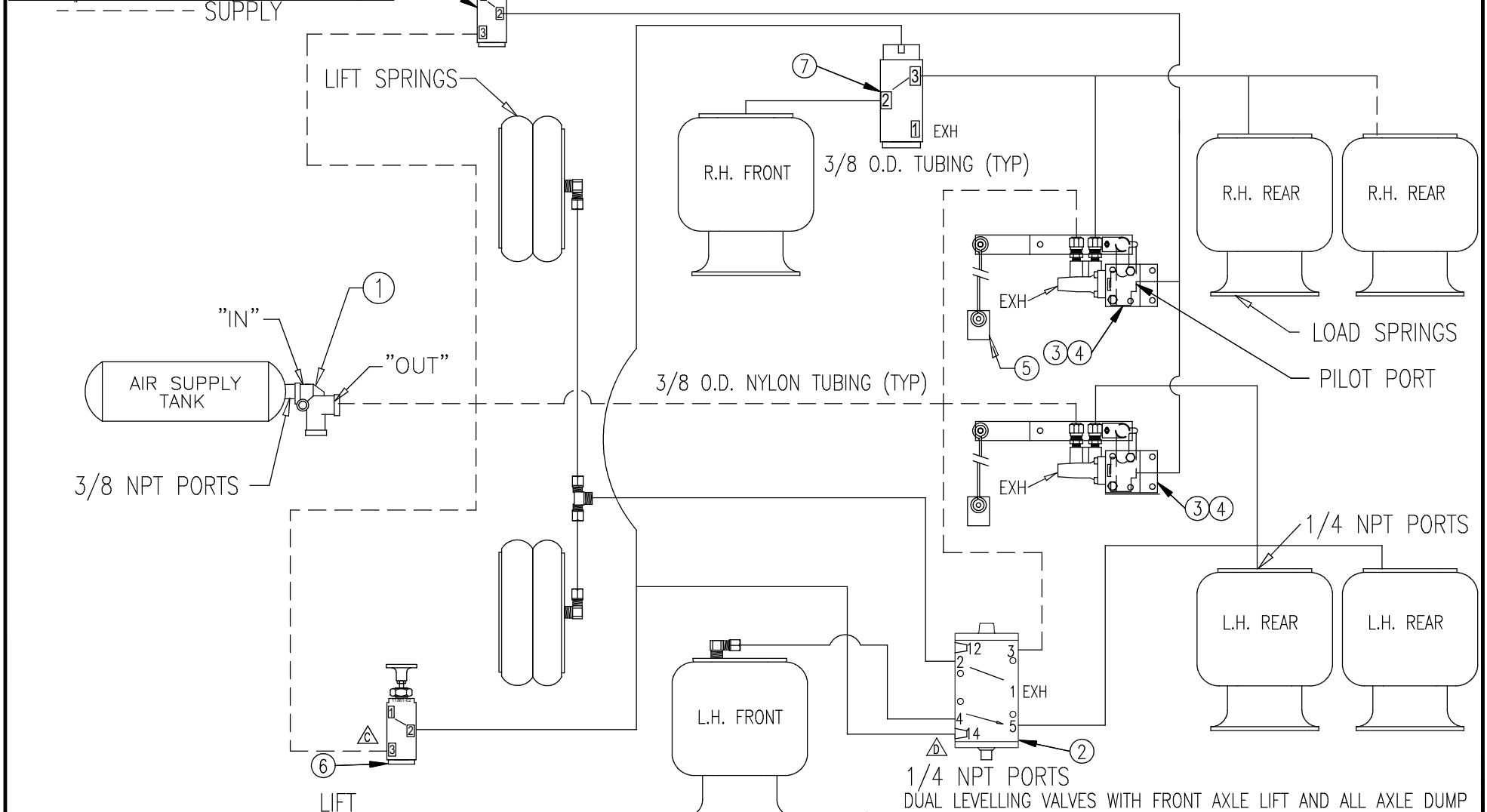


LEVEL	REVISION DESCRIPTION	ECN	DATE	BY
A	NEW DRAWING	N/A	12/5/00	CBD
B	ITM#2 WAS 10376-01, 6 WAS 17524, ADDED #7	C5367	4/23/08	JFF
C	CHANGED PORTS FOR ITEM #6	7667	08/04/10	CAK
D	PILOT LINE WAS GOING TO PORT 12 ON ITEM 2	8374	1/27/12	CWE
E	#6 WAS -02	1456	2/25/13	TLK

ITEM	PART NO.	QTY.	DESCRIPTION
1	10100	1	BRAKE PROTECTION VALVE
2	10376-02	1	VALVE AIR PILOT 5-PORT
3	17329	2	HEIGHT CONTROL VALVE HADLEY 500
4	11772	2	UPPER BRACKET
5	11773	2	LOWER BRACKET
6	11861-03	2	VALVE PUSH-PULL 3 PORT
7	10602-01	1	VALVE AIR PILOT 3 PORT



NOTES:
ALL NYLON TUBING AND FITTINGS
FURNISHED BY CUSTOMER.

DEPT AFFECTED	TOLERANCES (EXCEPT AS NOTED)	WATSON & CHALIN MFG., INC.			
20	DECIMAL ±	DESCRIPTION TANDEM W/ FRONT AXLE LIFT			
	FRACTIONAL ±	SUSPENSION MODEL	SCALE NTS	PREVIOUS ASSEMBLY -	
	ANGULAR ±	DATE 12/4/00	CHKD BY -	DRAWN BY CBD	SIZE A
				DRAWING NO. ACK-08DLMD	