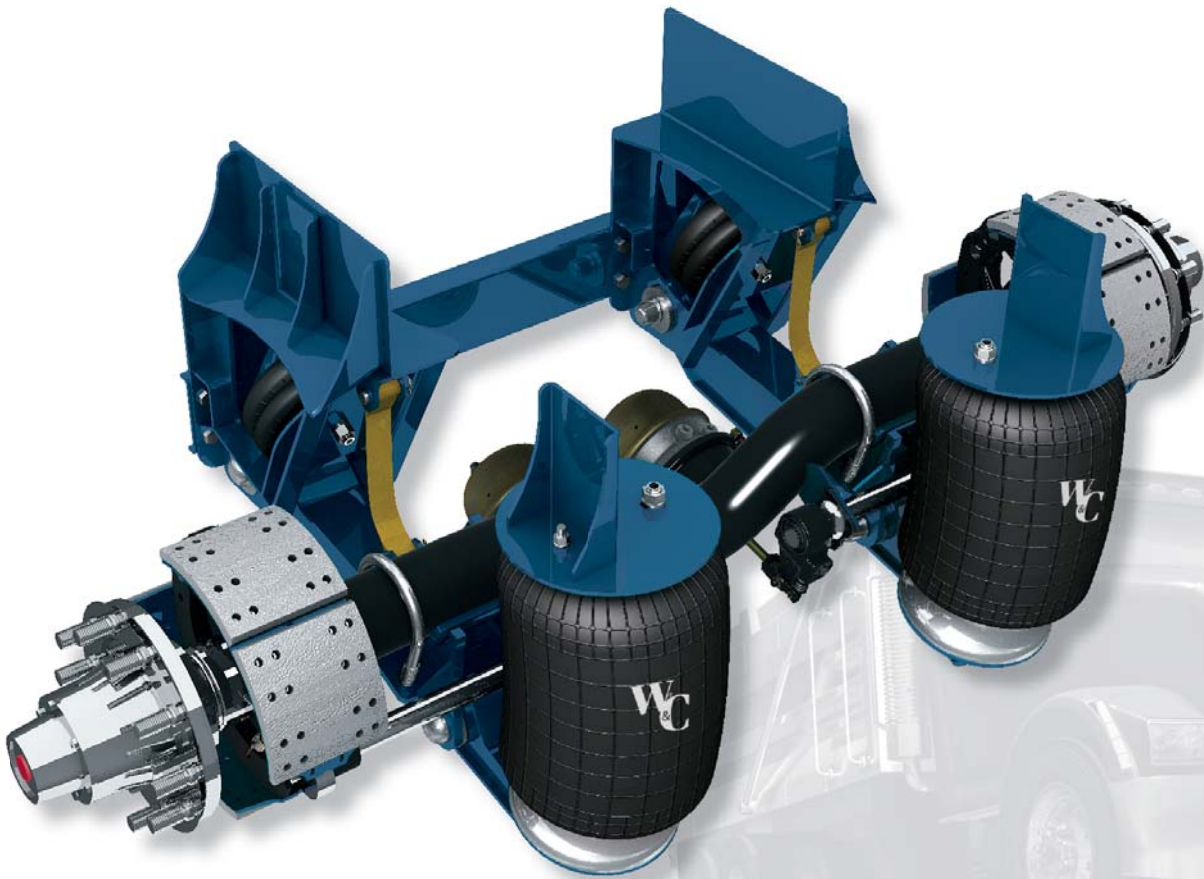


AL25K AUXILIARY LIFTABLE

NON-STEERABLE LIFT AXLE SUSPENSION SYSTEM

AL SERIES



AL25K

The **AL25K non-steerable lift axle** with a rated capacity up to 25,000 pounds has been an industry standard for many years. This model offers outstanding performance and proven durability. The AL25K is ideal for dump, refuse, heavy-haul and logging applications and is backed by our 5-year limited warranty*.

- 25,000 pound suspension capacity
- Positive axle stop straps
- Ride heights: Up to 15 inches
- Two-pin axle connection – with rubber bushing
- 5-year limited warranty*

* Contact your local Watson & Chalin representative for complete warranty terms, conditions and limitations.

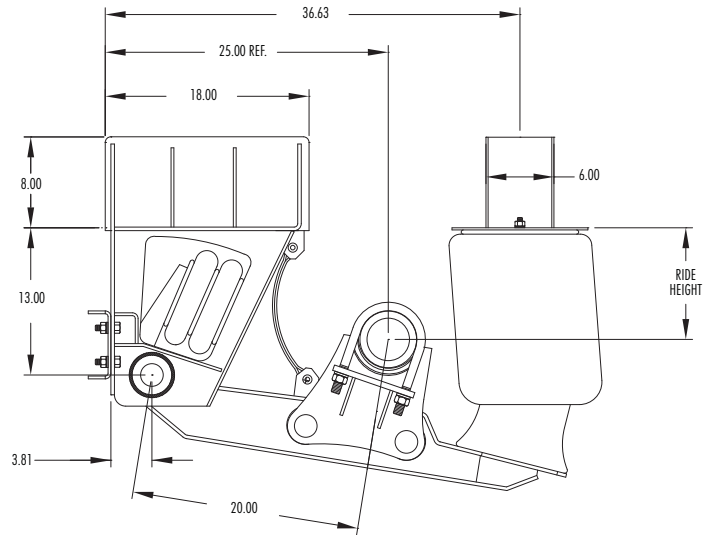
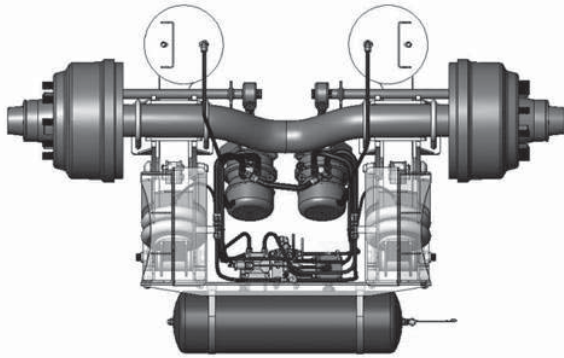
For more information, call 800.445.0736



Watson & Chalin is a brand of Hendrickson

Integrated Suspension and Axle Assembly

W&C Pre-plumbed kit



AL25K Specifications

Capacity:	25,000 pounds
Travel:	11 inches
Lift:	7 inches
Ride Heights:	Up to 15 inches
Packaging Space:	Up to 25 inches

Call W&C for your special configuration.

- Available as pusher or tag assembly
- Factory pre-assembled
- Positive axle stop
- Compact design
- Two-pin axle connection with rubber bushing

Contact Watson & Chalin at **972.547.6020** for additional information.



Watson & Chalin
 725 E. University Drive, McKinney, Texas 75069
 972.547.6020 • 800.445.0736 • Fax 972.542.0097
www.watsonsuspensions.com

