

MS-2200

The MS-2200 is a steel spring trailer suspension offering outstanding durability and dependability which reduces downtime and protects your load. With a rated capacity of up to 25,000 pounds per axle, the MS-2200 is available in single, tandem and tridem configurations. The MS-2200 is ideal for tankers, platforms, vans and container chassis applications.

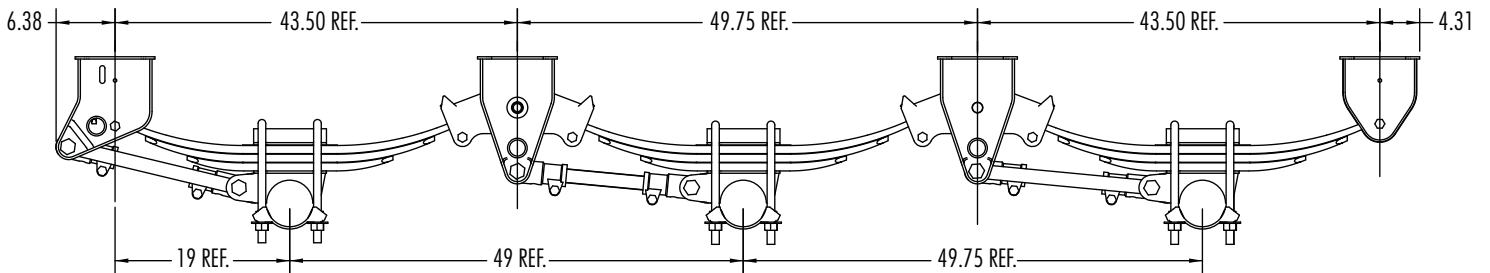
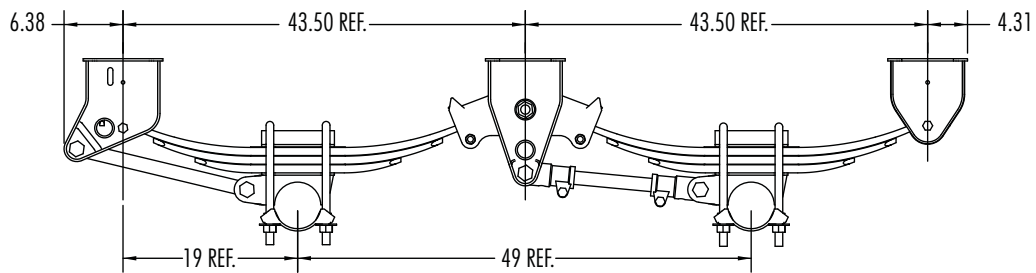
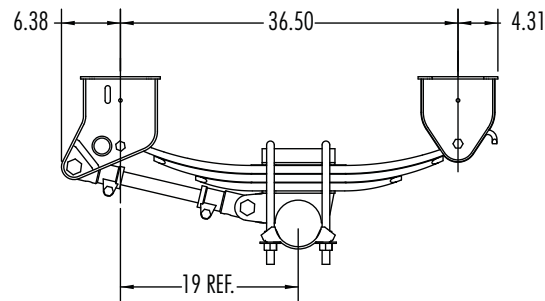
- Up to 25,000 pounds capacity per axle
- Single, tandem or triple axle configuration
- Fabricated hangers and equalizers
- 5 inch diameter axle seats
- 49 inch axle spacing standard
- 1-year limited warranty*

* Contact your local Watson & Chalin representative for complete warranty terms, conditions and limitations.

For more information, call 800.445.0736



Integrated Suspension and Axle Assembly



- Axle Spacing: 49 to 60 in.
- Hanger style: Under mount, flange mount and side mount
- Mounting Height:
Top mount: 13.75 in. to over 20 in.
Underslung: 4.25 in. to 7.5 in.
- Various springs available: Up to 25,000 lbs. per axle

Contact Watson & Chalin at **972.547.6020** for additional information.



Watson & Chalin
725 E. University Drive, McKinney, Texas 75069
972.547.6020 • 800.445.0736 • Fax 972.542.0097
www.watsonsuspensions.com

