



# SINGLE POINT ORDERING GUIDE

If additional options are required and do not appear on this guide, please note when ordering. This sheet covers basic information.

TO: \_\_\_\_\_ FROM: \_\_\_\_\_

COMPANY NAME: \_\_\_\_\_

DATE: \_\_\_\_\_ PHONE: \_\_\_\_\_ FAX: \_\_\_\_\_

SINGLE POINT  
NO AXLE

(Check all that apply)

**MODEL TYPE:** Straddle Mount  (If checked, proceed to Straddle Mount Details) Trunnion Mount  (If checked, proceed to Trunnion Mount Details)

**STRADDLE MOUNT DETAILS:** Straddle Plate Thickness: 1 Inch  Heavy-duty Formed  Other  (Must be approved by Engineering)

**INNER PLATE:** Height: \_\_\_\_\_ Width: \_\_\_\_\_

**OUTER PLATE:** Height: \_\_\_\_\_ Width: \_\_\_\_\_

**TOP PLATE:** No  Yes  If Yes, what type: Single Piece Solid  Single Piece w/Center Hole   
Single Piece w/Center Hole and 4 mounting   
Two Piece  Two Piece for Heavy Duty Outer

**TRUNNION MOUNT DETAILS:** Less Trunnion Stands  2.5" Trunnion Stands  4.5" Trunnion Stands   
6.5" Trunnion Stands  8.5" Trunnion Stands

**SINGLE POINT STYLE:** Lightweight  Heavy Duty  Parabolic  Pro Par

**SUSPENSION CAPACITY:** 44K  50K  60K  70K  80K

**AXLE SEAT DIAMETER:** 5.00"  5.75"

**AXLE SEAT STYLE:** Top Mount  QUIK-ALIGN® Top Mount  Underslung  Pro Par

**TRUNNION STYLE:** Standard Trunnion - Springs above trunnion tube  Reverse Trunnion - Trunnion tube above springs

**SPRING CENTERS:** 37"  38"  42"  43"  44"

**SPRING RESTRAINT:** Spring Restraint Not Required  Include Spring Restraint

**LIFT KIT** Yes  No

**COMMENTS** \_\_\_\_\_

SINGLE POINT  
with AXLE

(Check all that apply)

**SPINDLE TYPE:** N Spindle  P Spindle

**AXLE TRACK:** 71.5"  77.5"  Other  \_\_\_\_\_

**WALL THICKNESS:** .5"  .675"  .75"

**TIRE INFLATION:** N/A  TIREMAAX® CP  TIREMAAX® PRO  PSI  Other  \_\_\_\_\_

**BRAKE SIZE:** 16.5" x 7"  16.5" x 8.625"

**BRAKE CHAMBER SIZE:** Service / Spring: 24/24  24/30  30/30   
Service Only Type 24  Service Only Type 30

**CAM SPLINES:** 28 Spline  Other  \_\_\_\_\_

**CAM LENGTH:** 20.625"  23.75"  Other (6.5" min. - 35.5" max.)  \_\_\_\_\_

**COMMENTS** \_\_\_\_\_

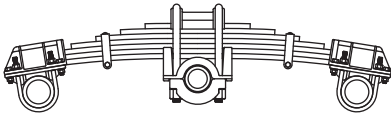
Note: Custom specifications may require engineering review and lead times may be adjusted.

# SINGLE POINT ORDERING GUIDE

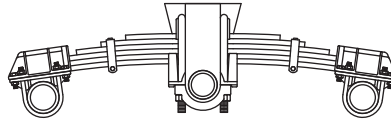
Continued

## Integrated Suspension and Axle Assembly

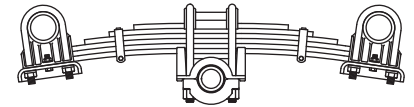
Please circle your suspension



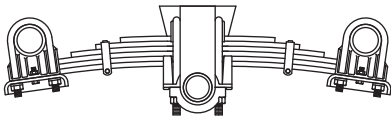
Trunnion Mount  
Overslung Axles  
Overslung Trunnion



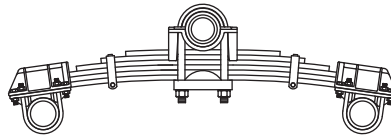
Straddle Mount  
Overslung Axles  
Overslung Trunnion



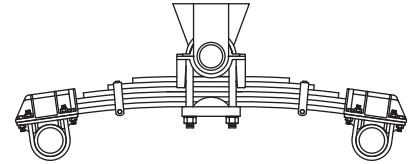
Trunnion Mount  
Underslung Axles  
Overslung Trunnion



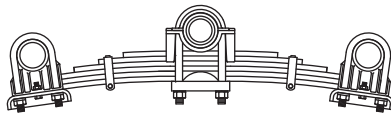
Straddle Mount  
Underslung Axles  
Overslung Trunnion



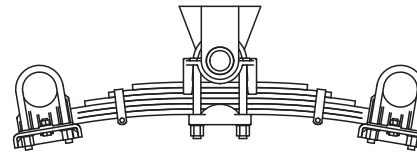
Trunnion Mount  
Overslung Axles  
Underslung Trunnion



Straddle Mount  
Overslung Axles  
Underslung Trunnion



Trunnion Mount  
Underslung Axles  
Underslung Trunnion



Straddle Mount  
Underslung Axles  
Underslung Trunnion

• **SPRING CAPACITIES:**

**Lightweight:** 44,000 lbs. - 5-leaf  
50,000 lbs. - 5-leaf  
50,000 lbs. - 3-leaf

(Parabolic - improve stiffness  
with weight savings)

**Heavy-duty:** 44,000 lbs. - 6-leaf  
50,000 lbs. - 7-leaf  
60,000 lbs. - 9-leaf  
70,000 lbs. - 10-leaf  
80,000 lbs. - 12-leaf

• **Mounting pedestal heights:**

9-, 10-, 11-, 12-, 14- and 15-inch

• Optional trunnion lengths available

• Severe-duty straddle plate assemblies.  
Available for 60,000-, 70,000- or  
80,000-pounds

Contact Watson & Chalin at 972.547.6020 for additional information.



**Watson & Chalin**

725 E. University Drive, McKinney, Texas 75069  
972.547.6020 • 800.445.0736 • Fax 972.542.0097

[www.watsonsuspensions.com](http://www.watsonsuspensions.com)

