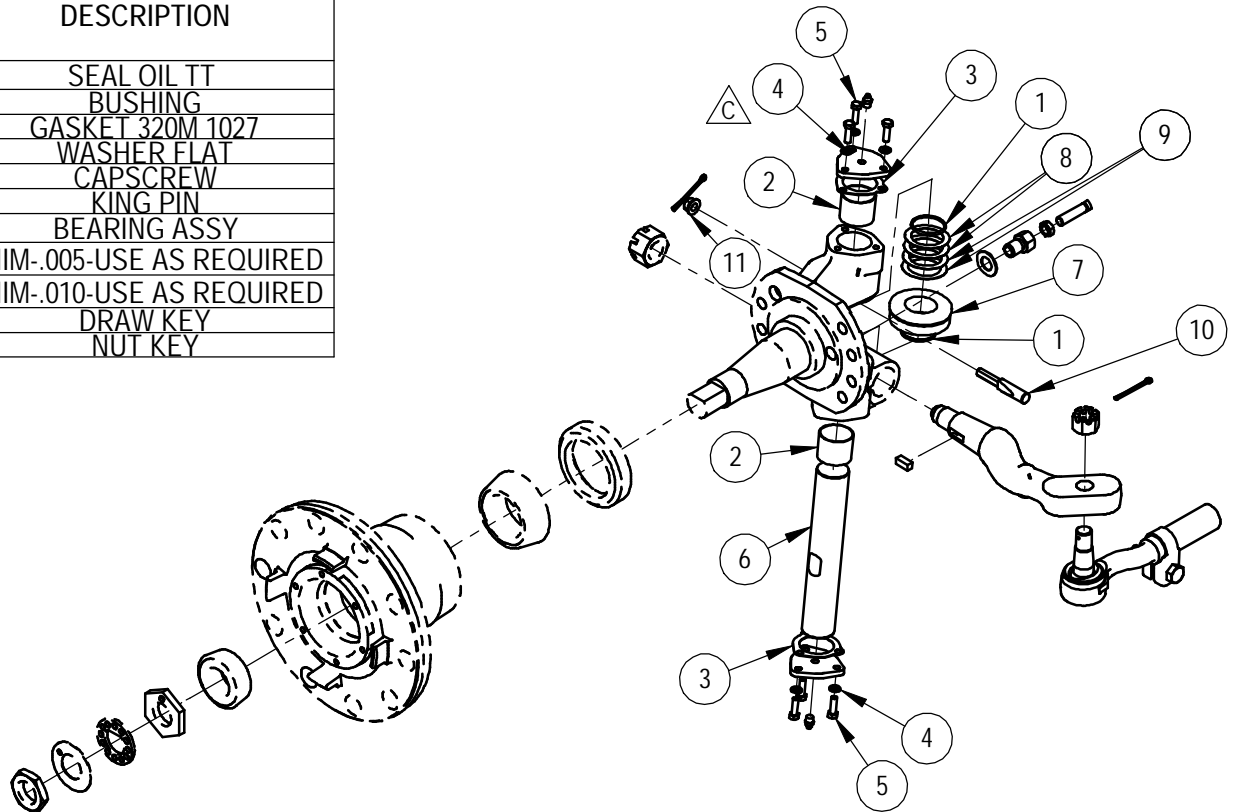


| REV. | DESCRIPTION | ECN | DATE | BY |
|------|---------------------------|--------|------------|-----|
| A | NEW DRAWING | C-4261 | 10/23/2006 | TEG |
| B | ADDED #10 AND #11 | C-5484 | 5/23/2008 | DRB |
| C | ADDED EXP VIEW, UPDTD BOM | C-5621 | 07/25/2008 | TLK |
| D | ADDED VENDOR PART NO.'S | 7769 | 9/16/2010 | TLK |




| SERVICE REPAIR KIT SRK102 | | | | KING PIN REPAIR KIT FF961 | |
|---------------------------|-----------------|--------------------------|-----|---------------------------|--|
| ITEM NO. | VENDOR PART NO. | (REF:**W/C OLD PART NO.) | QTY | DESCRIPTION | |
| 1 | A1205X1428 | 18040-01 | 2 | SEAL OIL TT | |
| 2 | 1225W985 | 18040-04 | 2 | BUSHING | |
| 3 | 3208M1027 | 18040-12 | 2 | GASKET 320M 1027 | |
| 4 | 1229E1669P | 18040-14 | 6 | WASHER FLAT | |
| 5 | S258P2 | 18040-15 | 6 | CAPSCREW | |
| 6 | 3101D1070 | 18040-17 | 1 | KING PIN | |
| 7 | A1228E1305 | 18040-18 | 1 | BEARING ASSY | |
| 8 | 2203L3002 | 18040-19 | 1 | SHIM-.005-USE AS REQUIRED | |
| 9 | 2203K3001 | 18040-20 | 1 | SHIM-.010-USE AS REQUIRED | |
| 10 | 7X-1002 | 18040-22 | 1 | DRAW KEY | |
| 11 | 1227Z780 | 18040-23 | 1 | NUT KEY | |

**NOTE: WATSON AND CHALIN OLD NUMBER IS REFERENCED ON DRAWING TO REDUCE CONFUSION AND FOR CROSS REFERENCE.



NOTE: PARENTHESIS () DENOTES REFERENCE DIMENSION

| | | | | |
|----------------|----------------|------------------------------|----------------------|---------------|
| MATERIAL INFO. | DEPTS AFFECTED | TOLERANCES (EXCEPT AS NOTED) | DESCRIPTION: SRK KIT | |
| STEEL PART NO. | 60/65 | DECIMAL ± .03 | PREVIOUS ASSY: - | |
| MATERIAL: | - | FRACTIONAL ± 1/32 | SUSPENSION MODEL: - | SCALE: 1:10 |
| WEIGHT: 170.10 | - | ANGULAR ± 0.5° | DATE: 10/23/06 | DRAWN BY: TEG |



Watson Suspension Systems

SIZE: A DRAWING NO: SRK102