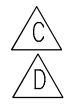
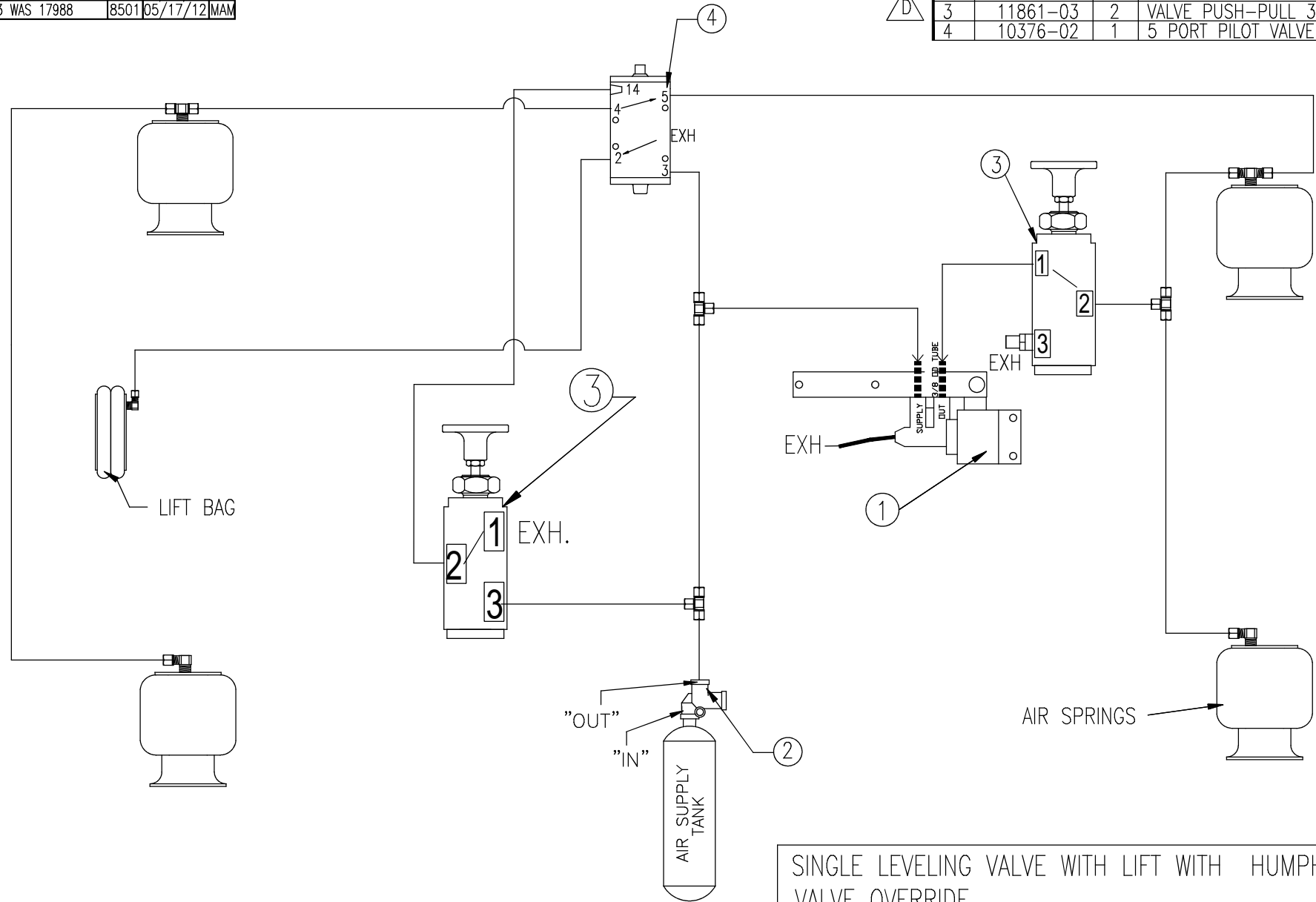


LEVEL	REVISION DESCRIPTION	ECN	DATE	BY
A	NEW DRAWING	2905	7/15/03	JFF
B	ITEM # 4 WAS 10376	21924	7/28/04	JFF
C	ITEM # 1 WAS 17760	5520	06/06/08	TLK
D	ITEM # 3 WAS 17988	8501	05/17/12	MAM



ITEM	PART NO.	QTY.	DESCRIPTION
1	17760-04	1	LEVELING VALVE
2	10100	1	BRAKE PROTECTION VALVE
3	11861-03	2	VALVE PUSH-PULL 3-PORT
4	10376-02	1	5 PORT PILOT VALVE



NOTES:

1. ALL EXTERNAL EXHAUST MUST USE MIN 6.00 LONG DRAIN TUBE FACING DOWN

SINGLE LEVELING VALVE WITH LIFT WITH HUMPHREY VALVE OVERRIDE

PART PROPERTIES		TOLERANCES (EXCEPT AS NOTED)		DESCRIPTION		MATERIAL	
AREA	—	DECIMAL	±	SEE ABOVE		—	
CUT LENGTH	—	FRACTIONAL	±	SUSPENSION MODEL	SCALE	PREVIOUS ASSEMBLY	
WEIGHT	—	ANGULAR	±	VARIES	NTS	—	
		DATE	CHKD BY	DRAWN BY	SIZE	DRAWING NO.	
		7/15/03	—	JFF	A	ACK166	

WATSON & CHALIN MFG., INC