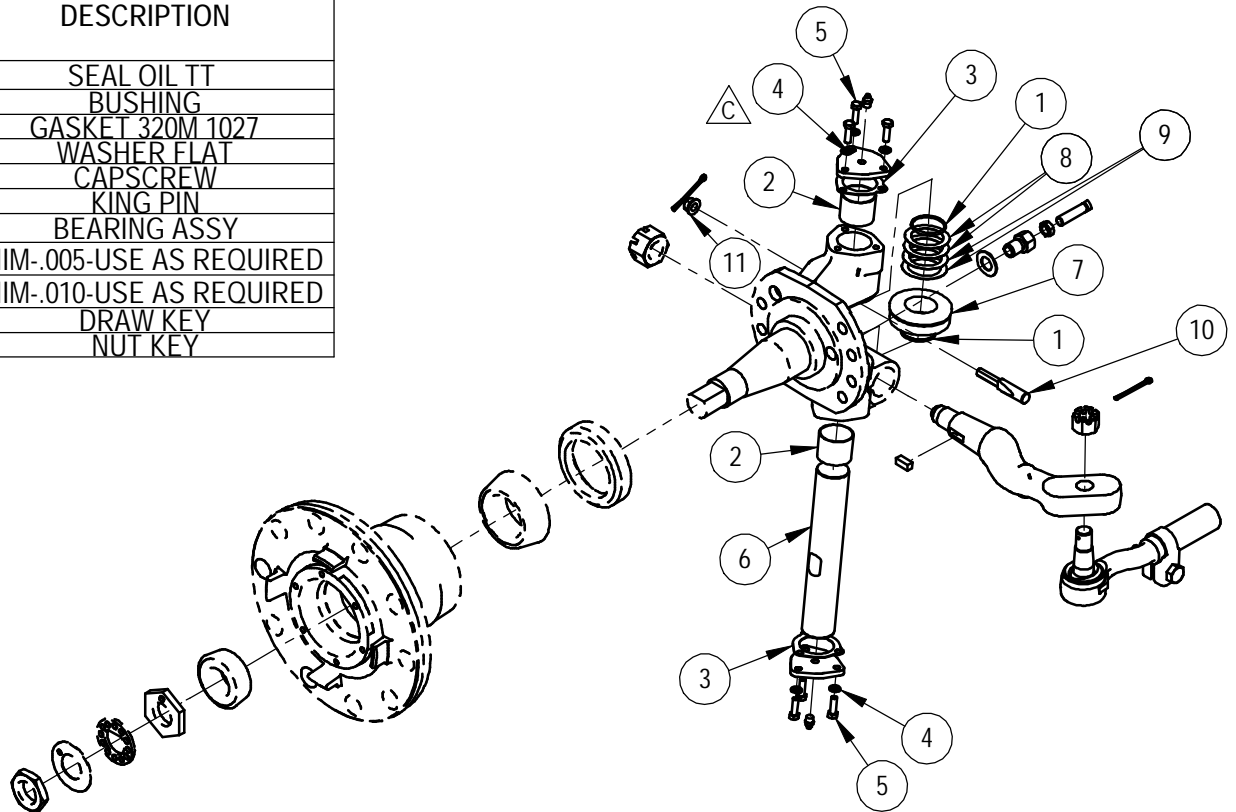


REV.	DESCRIPTION	ECN	DATE	BY
A	NEW DRAWING	C-4261	10/23/2006	TEG
B	ADDED #10 AND #11	C-5484	5/23/2008	DRB
C	ADDED EXP VIEW, UPDTD BOM	C-5621	07/25/2008	TLK
D	ADDED VENDOR PART NO.'S	7769	9/16/2010	TLK




SERVICE REPAIR KIT SRK102				KING PIN REPAIR KIT FF961	
ITEM NO.	VENDOR PART NO.	(REF:**W/C OLD PART NO.)	QTY	DESCRIPTION	
1	A1205X1428	18040-01	2	SEAL OIL TT	
2	1225W985	18040-04	2	BUSHING	
3	3208M1027	18040-12	2	GASKET 320M 1027	
4	1229E1669P	18040-14	6	WASHER FLAT	
5	S258P2	18040-15	6	CAPSCREW	
6	3101D1070	18040-17	1	KING PIN	
7	A1228E1305	18040-18	1	BEARING ASSY	
8	2203L3002	18040-19	1	SHIM-.005-USE AS REQUIRED	
9	2203K3001	18040-20	1	SHIM-.010-USE AS REQUIRED	
10	7X-1002	18040-22	1	DRAW KEY	
11	1227Z780	18040-23	1	NUT KEY	

**NOTE: WATSON AND CHALIN OLD NUMBER IS REFERENCED ON DRAWING TO REDUCE CONFUSION AND FOR CROSS REFERENCE.



NOTE: PARENTHESIS () DENOTES REFERENCE DIMENSION

MATERIAL INFO.	DEPTS AFFECTED	TOLERANCES (EXCEPT AS NOTED)	DESCRIPTION: SRK KIT	
STEEL PART NO.	60/65	DECIMAL ± .03	PREVIOUS ASSY: -	
MATERIAL:	-	FRACTIONAL ± 1/32	SUSPENSION MODEL: -	SCALE: 1:10
WEIGHT: 170.10	-	ANGULAR ± 0.5°	DATE: 10/23/06	DRAWN BY: TEG



Watson Suspension Systems

SIZE: A DRAWING NO: SRK102